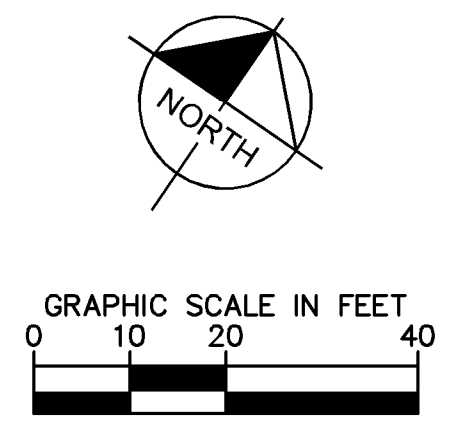
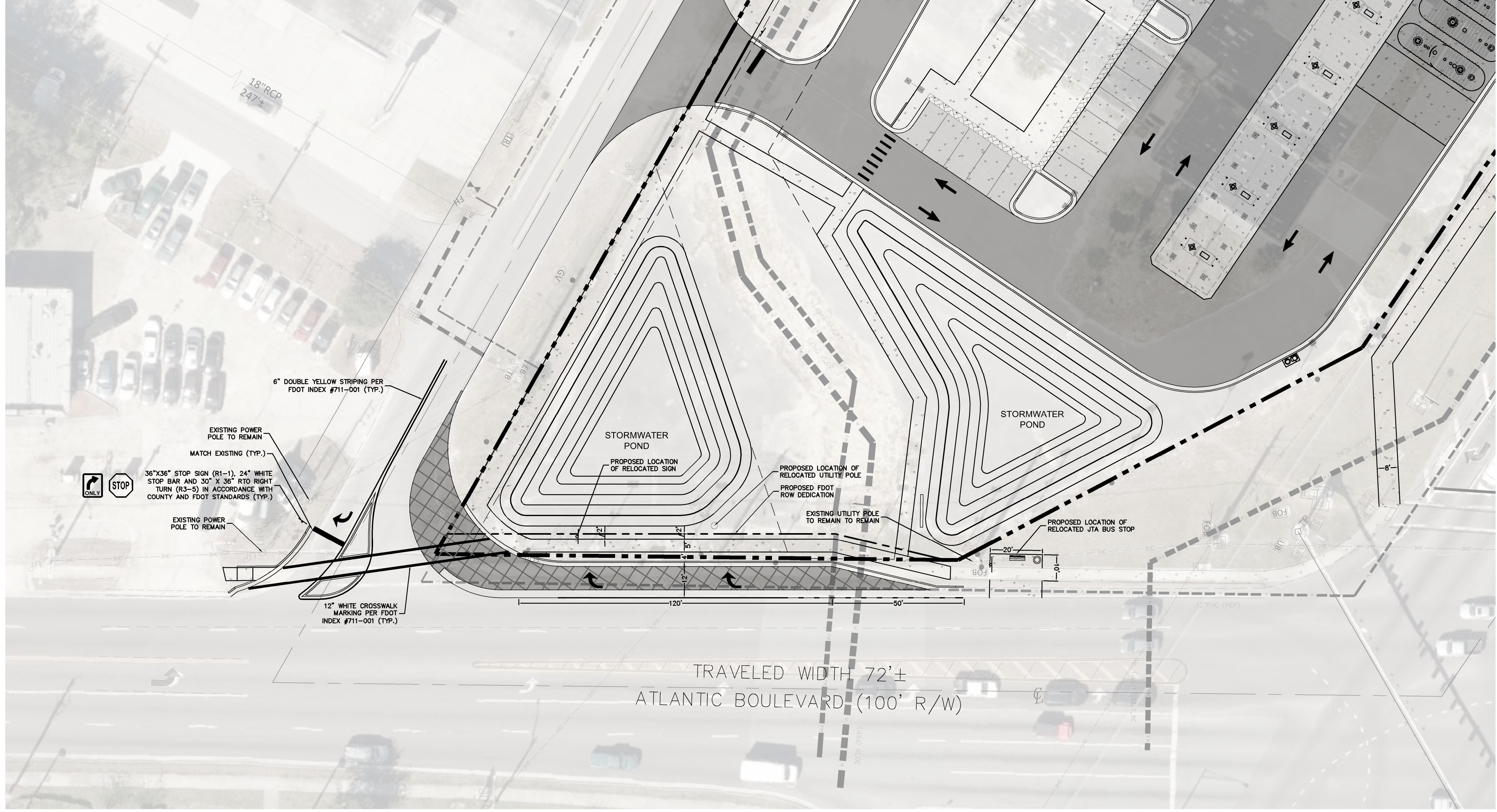


This document, together with the concepts and designs presented herein, as an instrument of service, is intended only for the specific purpose and client for which it was prepared. Reuse of and improper reliance on this document without written authorization and adaptation by Kimley-Horn and Associates, Inc. shall be without liability to Kimley-Horn and Associates, Inc.



CIRCLE K - ATLANTIC & SOUTHSIDE  
 CITY OF JACKSONVILLE FLORIDA

**MILL CREEK & ATLANTIC BLVD INTERSECTION IMPROVEMENTS**

KHA PROJECT	14999009
DATE	3/16/2021
SCALE AS SHOWN	JCS
DESIGNED BY	JCS
DRAWN BY	JCS
CHECKED BY	JCS

LICENSED PROFESSIONAL  
 JAROD C. STUBBS, P.E.  
 FLORIDA LICENSE NUMBER 89387  
 DATE: 3/16/2021

**Kimley»Horn**  
 © 2021 KIMLEY-HORN AND ASSOCIATES, INC.  
 189 S. ORANGE AVENUE, SUITE 1000, ORLANDO, FL 32801  
 PHONE: 407-898-1511  
 WWW.KIMLEY-HORN.COM CA 00000696

No.	REVISIONS	DATE	BY

SHEET NUMBER